



## UNI 50-3 ST-LG

Compact carrier vehicle as an explosives transporter with charger and telescopic platform for use in underground mining

- Explosives charging system for ANFO
- With telescopic boom and working platform

## DEFINITION OF OPTION / OPTIONAL EQUIPMENT

13667-2

In the following, the selectable equipment of the machine is identified by the terms "option" or "optional equipment."

The option describes equipment that can be selected in addition to the standard machine.

The optional equipment describes equipment that replaces other equipment on the machine.

- Travel drive gear shift in neutral position
- Parking brake is activated
- Steering is deactivated

## KEY FEATURES OF THE MACHINE

13421-1

Compact carrier vehicle as an explosives transporter with charger and telescopic platform for use in underground mining

## SAFETY

13369-4

All machines are designed and manufactured in accordance with the applicable legal requirements. They offer a correspondingly high level of safety for users.

Some safety features at a glance:

- ROPS/FOPS protective canopy
- Battery main switch, lockable
- Emergency stop button: one in the driver's cab, two outside
- Automatic shutdown when engine-specific parameters are exceeded
- Audible reverse signal
- 3-point safety entry
- Non-slip and color-contrasting entrances and exits
- Articulation lock
- Connector protected against moisture
- Brake test function

In the event of operator absence, the following happens automatically if the door contact switch is activated:

## OPERATING CONDITIONS

12998-5

Permitted ambient temperature \* -20 °C to +40 °C

\* *Observe the cold start limit temperature of the engine*

Permitted longitudinal inclination, maximum	35 %
---	------

Operating height without power reduction, maximum	< 1,500 m
---	-----------

## WEIGHTS AND LOADS

13422-2

Operating weight *	12,500 kg
--------------------	-----------

Permitted payload, maximum *	2,000 kg
------------------------------	----------

Permitted front axle load, maximum	6,500 kg
------------------------------------	----------

Permitted rear axle load, maximum	8,000 kg
-----------------------------------	----------

\* *Depends on selected options and optional equipment*

## CHASSIS

13293-1

Articulation angle, maximum	±10°
-----------------------------	------

- Split chassis with articulated steering
- Fixed front axle and oscillating rear axle

## Technical data

4410-00-136 - 18.04.2026

### ENGINE

13296-4

#### DEUTZ TCD 2013 L04 2V diesel engine

Manufacturer	DEUTZ
Type	TCD 2013 L04 2V
Emission standard EU	Stage III A
Emission standard USA	EPA Tier 3
Output At speed	126 kW 2,300 rpm
Alternator	28 V 80 A
Starter motor	24 V 4 kW
Cold start limit temperature	-15 °C

- Catalytic converter with measuring points
- Fuel prefilter and fuel fine filter with water separator
- Manual fuel feed pump
- Dry air filter with pre-separator
- Liquid-cooled

- Catalytic converter with measuring points
- Fuel prefilter and fuel fine filter with water separator
- Dry air filter with pre-separator
- Liquid-cooled

#### Diesel engine DEUTZ TCD 4.1 L4

Manufacturer	DEUTZ
Type	TCD 4.1 L4
Emission standard EU	Stage V
Emission standard USA	EPA Tier 4F
Output At speed	105 kW 2,300 rpm
Alternator	28 V 100 A
Starter motor	24 V 4 kW
Exhaust after-treatment	DOC DPF SCR
Cold start limit temperature	-15 °C

- Fuel prefilter and fuel fine filter with water separator
- Dry air filter with pre-separator
- Liquid-cooled

### ENGINE (OPTIONAL EQUIPMENT)

13306-5

#### Diesel engine CATERPILLAR C4.4

Manufacturer	CATERPILLAR
Type	C4.4
Emission standard EU	Stage III A
Emission standard USA	EPA Tier 3
Output At speed	106 kW 2,200 rpm
Alternator	28 V 60 A
Starter motor	24 V 4.5 kW
Cold start limit temperature	-15 °C

### FUEL SYSTEM

13307-1

Fuel tank capacity	125 L
--------------------	-------

- Electric level indicator
- Shut-off valve to prevent fuel leakage in the event of a hose breakage

### DRIVE

13311-1

Manufacturer	DANA
Type	24300

## Technical data

4410-00-136 - 18.04.2026

### Travel speed:

1st gear	5 km/h
2nd gear	10 km/h
3rd gear	25 km/h

### Tractive force (loaded):

1st gear	130 kN
2nd gear	60 kN
3rd gear	26 kN

### Climbing power (loaded):

1st gear	97 %
2nd gear	34 %
3rd gear	14 %

- Hydrodynamic travel drive
- "Full power shift" transmission
- Three forward and reverse gears
- Single-stage torque converter
- Drive reversible under load
- Continuous all-wheel drive

### AXES

13315-1

Manufacturer	DANA
Front axle type	113
Front axle differential	Open
Rear axle type	113
Rear axle differential	Open

### SERVICE BRAKE

11330-3

- Hydraulic foot brake as 2-circuit external force brake system
- Wet brake in oil bath

### PARKING BRAKE

11332-1

- Spring tensioned, hydraulically released (SAHR)
- Manual pump to release the brake in case of system failure

### EMERGENCY BRAKE

13234-1

- The parking brake also acts as an auxiliary brake

### TIRES

13323-1

Tire size	12.00x20
Tire filling	Air

- Single tires with inner tube

### TIRES (OPTIONAL EQUIPMENT)

13325-1

Tire size	12.00x20
Tire filling	Air

- Single tires without inner tube

### STEERING

13318-1

- Hydraulic articulated steering with two double-acting hydraulic cylinders
- Steering wheel steering
- Emergency steering

### HYDRAULICS

13321-1

Hydraulic tank capacity	130 l
-------------------------	-------

## Technical data

4410-00-136 - 18.04.2026

- Inspection gauges for min/max level display
- Temperature sensor
- Electrical fill level monitoring
- All fittings as JIC version

### HYDRAULICS (OPTIONAL)

13376-1

- Manual pump for filling the hydraulic fluid reservoir
- Electric pump for filling the hydraulic fluid reservoir

### ELECTRICAL SYSTEM

13237-1

Operating voltage	24 V
Number of batteries	2 pcs.
Battery voltage	12 V
Battery charge	155 Ah

### ELECTRICAL SYSTEM (OPTIONAL)

12822-3

- Jump start socket
- Enhanced sealing of the connectors with grease filling and sealing tape

### LIGHTING

13426-2

All headlights and lights as LED variants:

- Two main headlights at the front, with high beam, low beam, parking light and turn signals
- Two working lights at the rear of the cabin
- Two tail lights with tail light, brake light, reversing light and turn signals
- Two additional reversing lights
- One yellow flashing light
- Two working lights on the platform
- Two working lights on the working platform

### LIGHTING (OPTIONAL)

13375-2

- Direction indicators red / green, front / rear
- Two impact lights in the articulated joint area
- Two additional working lights on the front of the cabin
- Blue rotating flashing beacon / flashing lights \*
- Red rotating flashing beacon / flashing light \*

\* Maximum of two lights possible

### CAB

13329-7

#### Driver's seat and passenger seat

- Lap belt
- Vinyl cover
- Adjustable backrest and seat surface
- Height adjustable
- Mechanical suspension

#### Open cabin

- Open cabin with half doors
- Exit on both sides
- Storage under the passenger seat
- Windshield made of laminated safety glass
- Wiper/washer system for windshield
- Interior lighting
- Reading light
- Ventilation for windshield
- Two mirrors
- Document box
- All drive relevant switches, displays and operations are located within reach of the operator
- Information display for all engine-specific data

## DRIVER'S CAB (OPTIONAL EQUIPMENT)

13353-6

- Mechanically sprung seats for driver and passenger with 3-point harness and seatbelt monitoring
- Air-sprung seats for driver and passenger with 3-point harness and seatbelt monitoring
- Heated exterior mirrors
- WEBASTO water heater

- Holder for self-rescuer
- Second passenger seat \*

\* Not possible with rotating driver's seat

## Rotating driver's seat

- Rotates 90° for better rear view
- Brake pedal, accelerator pedal and gear shifting controls are also rotated
- Mechanical locking mechanism

## Radio preparation

- Ignition voltage
- Battery voltage
- Vehicle mass

## Enclosed cabin

- Enclosed cabin with doors and sliding windows
- Exit on both sides
- Storage under the passenger seat
- Windshield made of laminated safety glass
- Wiper/washer system for windshield
- Interior lighting
- Reading light
- Heater with ventilation and filter
- Two mirrors
- Document box
- All drive relevant switches, displays and operations are located within reach of the operator
- Information display for all engine-specific data

## CAN bus interface preparation

- Ignition voltage
- Battery voltage
- Vehicle mass
- CAN High
- CAN Low

## DRIVER'S CAB(OPTIONAL)

13354-5

- Air conditioning system
- Rearview camera system or 4-camera system
- Vandalism protection
- Activation of the parking brake when the travel drive is in the neutral position for longer than 3-4 seconds
- Tire pressure monitoring
- Dead man's switch for driving mode
- Electric emergency steering
- Engine start warning

## SUPERSTRUCTURE

13429-3

### Explosives charging system with BAM approval

Number of ANFO containers	1 pc.
Volume of ANFO containers	500 l
Operating pressure, maximum	6 bar

- ANFO containers with fittings and pipes made of stainless steel
- Fittings and pipes mounted on the ANFO container
- Feed hopper with grille to protect against coarse material
- Pneumatic valves for explosives charging
- Electric vibrator on the ANFO container for better emptying
- Platform for transporting ANFO material and for manual filling of the ANFO container
- Platform and railing lined with wood
- Railing height 1.1 m
- Two safety doors on the left and right

### Compressor

Delivery quantity	4 m <sup>3</sup> /min
-------------------	-----------------------

## Technical data

4410-00-136 - 18.04.2026

Operating pressure 8 bar

- Screw compressor
- Hydraulically driven by the diesel engine
- Load control
- Pressure reservoir
- Water separator
- Compressed air connection IN/OUT

### Control system

- Electric/pneumatic control system on the platform
- In addition, a cable remote control for the valves for blowing out the explosives, cleaning the charging hoses and cleaning the drill holes

### Charging hose

Length 25 m

Inner diameter 19 mm

External diameter 25 mm

- Antistatic
- Suitable for holes from 38 mm diameter

### Storage box for detonators

- Waterproof
- Lined with wood
- Closed by a flap

### Working platform

Payload 450 kg

- Telescopic boom can be hydraulically rotated and telescopically extended
- Powered by diesel engine
- Hose rupture protection on all safety-relevant hydraulic cylinders
- Emergency lowering from the platform and from the ground using an electric pump
- Basket railing with foot and knee protection
- Two side access points, closed by a safety door
- Stainless steel control cabinets

- Diesel engine and compressor start and stop from the working platform
- Electro-hydraulic control system with joysticks on the working platform
- Alignment of the parallel guide from the basic vehicle
- Working lights on the working platform
- Folding brackets as protection against ridge contact

### Rear supports

- Two supports at the rear of the machine
- Vertically extending
- With hose rupture protection
- Release of platform operation only when the supports make contact with the ground, ensured by limit switch

### Grounding against static charge

- Two grounding straps on the vehicle frame
- Grounding lance with 10 m earthing cable
- Holder for grounding lance
- Holder for grounding cable

13430-1

## SUPERSTRUCTURE (OPTIONAL EQUIPMENT)

### Electro-hydraulic powerpack

Power approx. 45 kW

Operating voltage 400 V / 50 Hz

- Powered from the pit network
- Single drive for working hydraulics and compressor \*

*\* Power from diesel engine omitted*

### Electro-hydraulic powerpack

Power approx. 45 kW

Operating voltage 400 V / 50 Hz

## Technical data

4410-00-136 - 18.04.2026

- Powered from the pit network
- Additional drive for working hydraulics and compressor

### Cable drum

Cable length	50 m
--------------	------

- For connection to the pit network

13431-2

### SUPERSTRUCTURE (OPTIONAL)

#### Charging hose

Length	25 m
--------	------

Inner diameter	22 mm
----------------	-------

External diameter	28 mm
-------------------	-------

- Antistatic
- Suitable for holes from 45 mm diameter

#### Charging hose

Length	25 m
--------	------

Inner diameter	30 mm
----------------	-------

External diameter	38 mm
-------------------	-------

- Antistatic
- Suitable for holes from 64 mm diameter

#### ANFO container

Number of ANFO containers	1 pc.
---------------------------	-------

Volume of ANFO containers	730 / 800 l
---------------------------	-------------

#### Protective canopy on the basket

- Hydraulically adjustable
- Covers approx. 40% of the standing area

### WORK EQUIPMENT (OPTIONAL)

13432-1

- Pressure washer with 70 l water tank

#### Front supports

- Hydraulic telescopic support
- Right and left, fixed mounted on the front end
- Vertically extending
- Lowering brake valves in the hydraulic cylinders

### FIRE PROTECTION

12818-6

- Handheld fire extinguisher

### FIRE PROTECTION (OPTIONAL EQUIPMENT)

12993-3

- HRD fire suppression system (PROTECFIRE) with manual trigger and dry chemical extinguishing agent
- HRD fire suppression system (PROTECFIRE) with automatic trigger and dry chemical extinguishing agent
- HRD fire suppression system (ANSUL) with manual trigger and wet agent solution
- HRD fire suppression system (ANSUL) with automatic trigger and wet agent solution
- Portable fire extinguisher (ANSUL) with 7.7 kg of dry chemical extinguishing agent

### FIRE PROTECTION (OPTIONAL)

13365-1

- Additional handheld fire extinguishers

*\* Type depends on the handheld fire extinguisher selected*

### PAINTWORK

13366-1

Color of cabin / driver's cab	RAL 7016
-------------------------------	----------

## Technical data

4410-00-136 - 18.04.2026

Chassis color

RAL 1007

### PAUS CONNECT CLOUD (OPTIONAL)

11355-8

### ACCESSORIES

- Two wheel chocks
- Two hazard warning triangles
- Tool bag
- Safety helmet and hearing protection
- First aid kit

12249-5

### ACCESSORIES (OPTIONAL)

- Spare rim
- Spare tire
- Expanded tool kit
- Central lubrication system on basic vehicle
- Deflector for windshield and mirror as tubular construction

13368-1



The PAUS CONNECT CLOUD collects and visualizes data, messages or location information of the machine.

The data is transmitted to the cloud using a built-in telemetry unit.

Your advantages:

- Faster service
- Lifecycle cost management
- Data transmission via existing wi-fi and/or cellular networks
- Data buffering of all data in case of no connectivity (up to 30 days)
- Access to the PAUS CONNECT CLOUD
- Remote diagnostics/remote maintenance
- Statistical usage analysis
- Vibration monitoring
- Individual evaluation and statistics

### DOCUMENTATION

- A printed operating manual in the local language in the document box
- Operating manual, spare parts list and circuit diagrams in electronic form via online access

11344-3

### DOCUMENTATION (OPTIONAL)

- An additional operating manual in local language, in printed form, included with the machine
- A spare parts list in local language or English, in printed form

12825-4

### MAINTENANCE KITS (OPTIONAL EQUIPMENT)

- Service package, 2000 operating hours
- Service package, 3000 operating hours
- Service package, 5000 operating hours

12824-3

### CUSTOMER SERVICE

11353-2

Repair work and maintenance work are central points in customer support. Here, PAUS is broadly positioned and offers its customers and dealers worldwide an extensive service program. Trained employees are available on our service hotline, as are competent contact persons at our local dealers.

11354-2

### SPARE PARTS

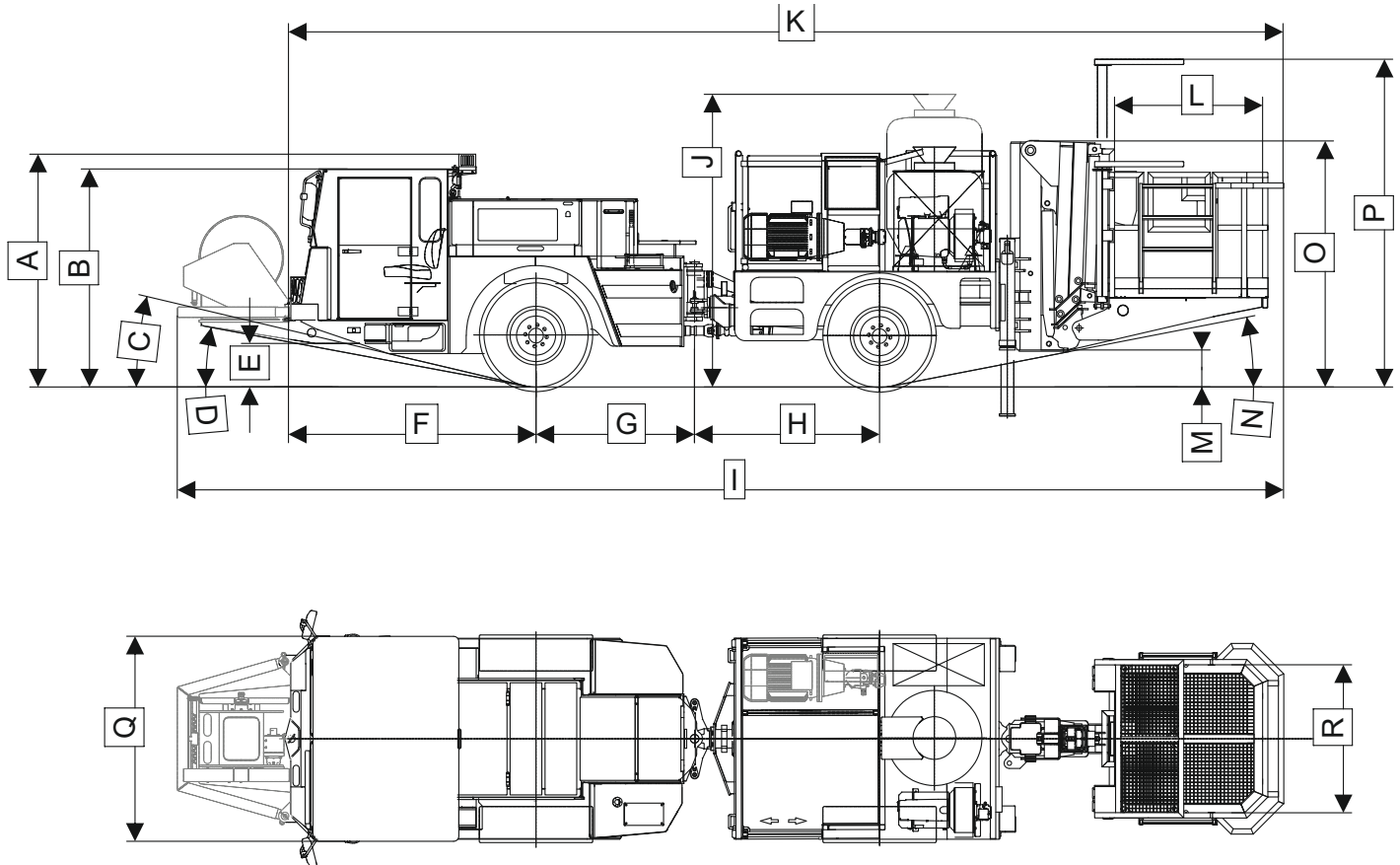
We attach great importance to a high level of availability of PAUS spare parts. In addition to maintenance and service parts, which are available at any time, customers and dealers are able to purchase spare parts for engines, axles, transmissions, etc. easily and quickly through us. Benefit from our on-line catalog with refined spare parts lists.

# Technical data

4410-00-136 - 18.04.2026

## DIMENSIONS

11855-5



839476-03

*The illustration may differ from the scope of delivery*

Dimension	Value	Unit
A	2,280	mm
B	2,140	mm
C	13	°
D	11	°
E	320	mm
F	2,380	mm
G	1,500	mm

\*800 l volume on machines with explosive pressure vessel

## Technical data

4410-00-136 - 18.04.2026

Dimension	Value	Unit
H	1,750	mm
I	10,500	mm
J*	2,760	mm
K	9,500	mm
L	1,400	mm
M	320	mm
N	11	°
O	2,400	mm
P	3,100	mm
Q	1,900	mm
R	1,400	mm

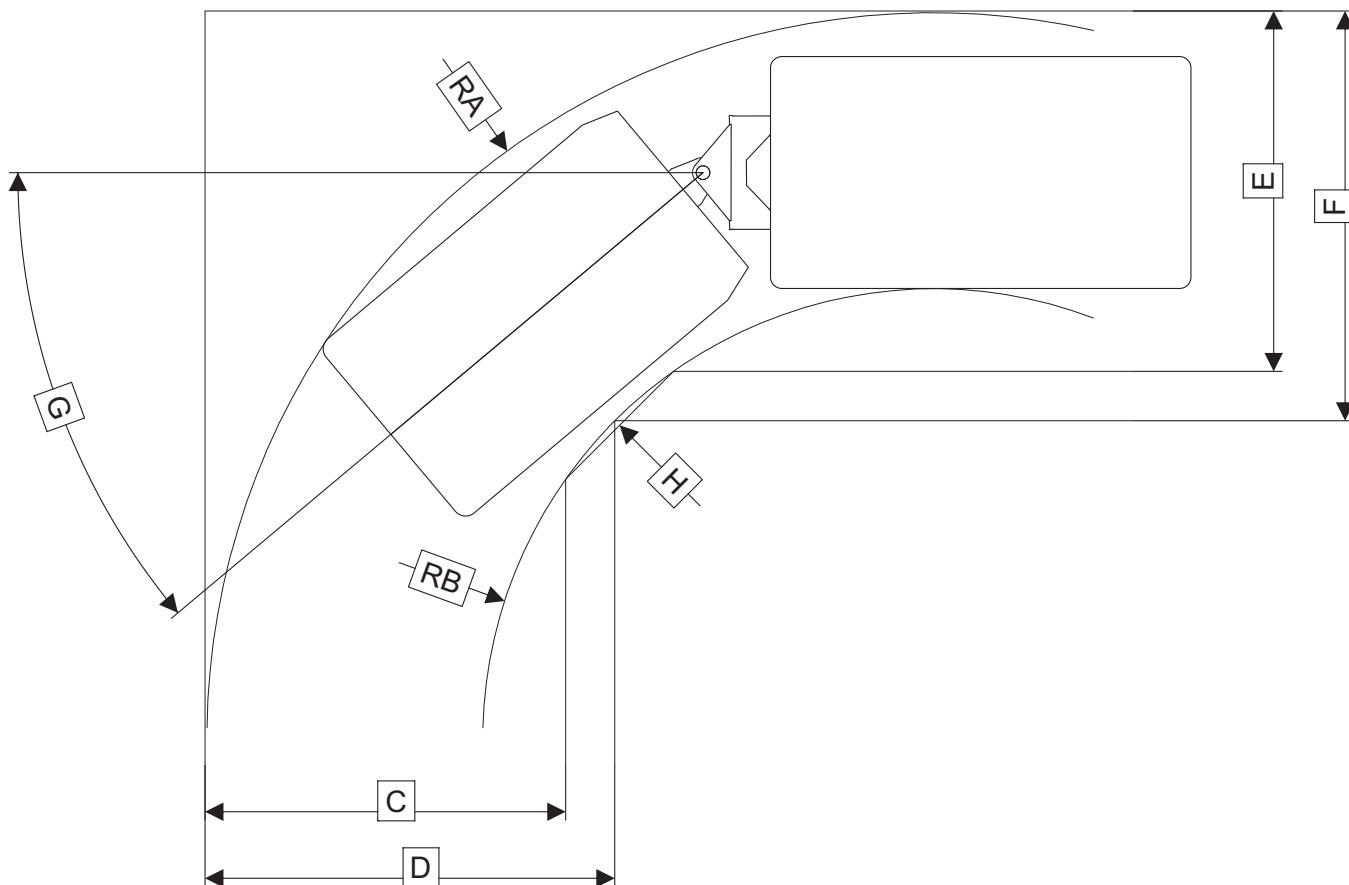
\*800 l volume on machines with explosive pressure vessel

# Technical data

4410-00-136 - 18.04.2026

13433-3

## TURNING RADII



The illustration may differ from the scope of delivery

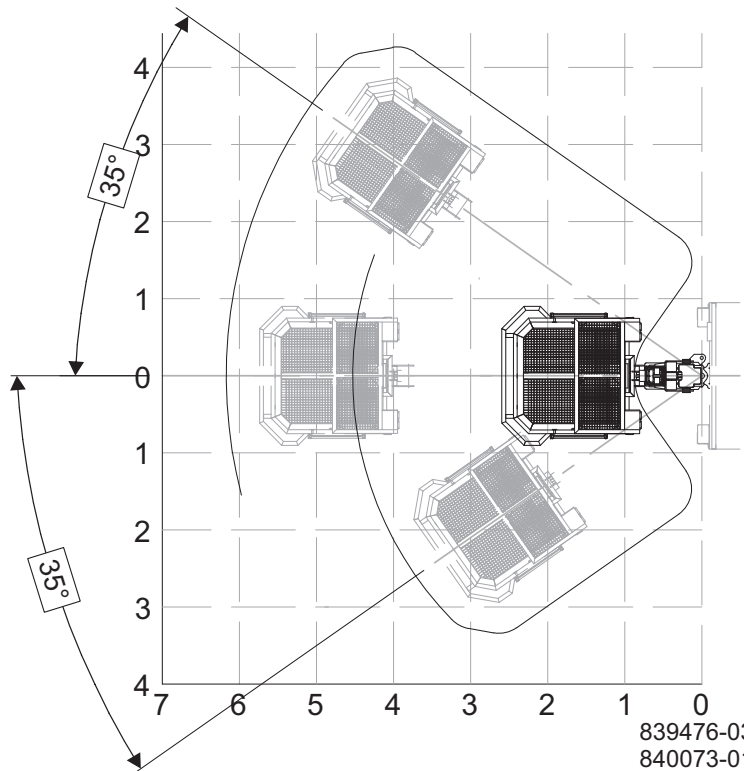
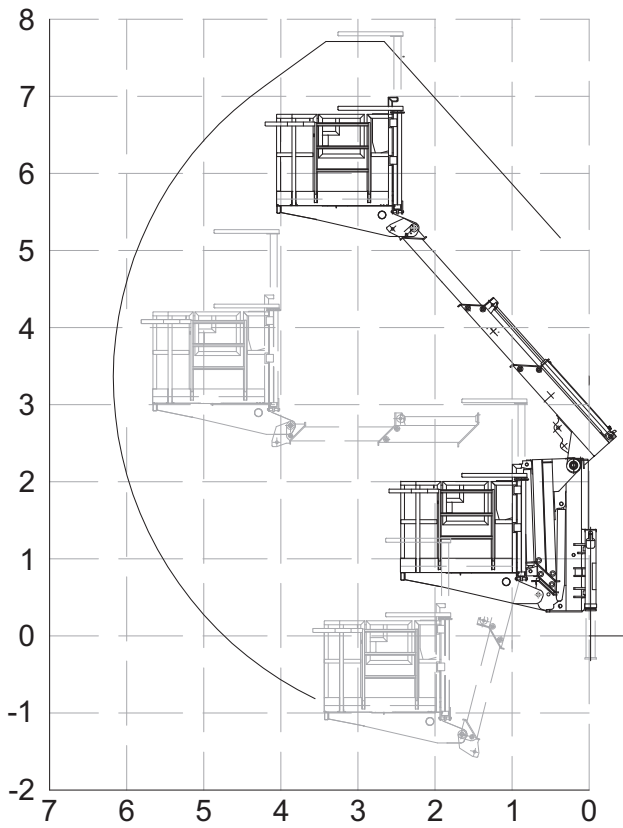
Dimension	Note	Value	Unit
RA		6,400	mm
RB		3,400	mm
C		3,500	mm
D		4,000	mm
E		3,500	mm
F		4,000	mm
G	Steering angle, maximum	40	°
H	Beveled corner	1,200x45°	mm

# Technical data

4410-00-136 - 18.04.2026

13434-3

## WORKING PLATFORM WORKING AREA



839476-03  
840073-01  
901393-00

*The illustration may differ from the scope of delivery*  
Values specified in meters.