



PScale 10-T

Compact scaler for mounting a hydraulic hammer for use in underground mining

- Best price / power-to-weight ratio
- Largest scaling cover in its class
- Sensitive control system
- Comfort cabin
- Ultra-compact design

Technical data

6121-00-000 - 18.04.2026

DEFINITION OF OPTION / OPTIONAL EQUIPMENT

13667-2

In the following, the selectable equipment of the machine is identified by the terms "option" or "optional equipment."
The option describes equipment that can be selected in addition to the standard machine.
The optional equipment describes equipment that replaces other equipment on the machine.

KEY FEATURES OF THE MACHINE

12591-7

Compact scaler for mounting a hydraulic hammer for use in underground mining

Working height, maximum	10.0 m
-------------------------	--------

SAFETY FEATURE

16298-1

All machines are designed and manufactured in accordance with the applicable legal requirements. They offer a correspondingly high level of safety for users.

Some safety features at a glance:

- ROPS/FOPS protective canopy
- Battery main switch, lockable
- EMERGENCY STOP button: 1x in driver's cab, 1x outside
- Engine start warning with startup delay
- Audible reverse signal
- 3-point safety entry
- Emergency exit
- Non-slip and color-contrasting entrances and exits
- Articulation lock
- Brake test function
- Warning when starting the machine
- Alarm when the door is open

The following happens automatically in the case of operator absence:

- Travel drive gear shift in neutral position
- Parking brake is activated

OPERATING CONDITIONS

12224-9

Permitted ambient temperature *	-20 °C to +50 °C
---------------------------------	------------------

** Observe the cold start limit temperature of the engine*

Permitted longitudinal inclination, maximum	35 %
---	------

Operating height without power reduction, maximum	< 1,500 m
---	-----------

WEIGHTS AND LOADS

12674-3

Operating weight *	16,000 kg
--------------------	-----------

Permitted attachment weight, maximum	400 kg
--------------------------------------	--------

Permitted front axle load, maximum	11,500 kg
------------------------------------	-----------

Permitted rear axle load, maximum	8,000 kg
-----------------------------------	----------

** Depends on selected options and optional equipment*

CHASSIS

12229-8

Articulation angle, maximum	±8°
-----------------------------	-----

- Divided chassis with articulated steering
- Fixed front axle and oscillating rear axle
- Automatic lock function of the oscillating axle by swiveling the boom

ENGINE

12230-11

Diesel engine CATERPILLAR C4.4

Manufacturer	CATERPILLAR
Type	C4.4

Technical data

6121-00-000 - 18.04.2026

Emission standard EU	Stage III A
Emission standard USA	EPA Tier 3
Output At speed	96.5 kW 2,200 rpm
Alternator	28 V 100 A
Starter motor	24 V 4.5 kW
Cold start limit temperature	-15 °C

- Catalytic converter with measuring points
- Fuel prefilter and fuel fine filter with water separator
- Manual fuel feed pump
- Dry air filter with pre-separator

12250-17

ENGINE (OPTIONAL EQUIPMENT)

Diesel engine CATERPILLAR C4.4

Manufacturer	CATERPILLAR
Type	C4.4
Emission standard EU	Stage V
Emission standard USA	EPA Tier 4F
Output At speed	98 kW 2,200 rpm
Alternator	28 V 100 A
Starter motor	24 V 5.5 kW
Exhaust after-treatment	DOC DPF SCR
Cold start limit temperature	-25 °C

- Fuel prefilter and fuel fine filter with water separator
- Dry air filter with pre-separator

DEUTZ TCD 2012 L04 2V diesel engine

Manufacturer	DEUTZ
Type	TCD 2012 L04 2V
Emission standard EU	Stage III A
Emission standard USA	EPA Tier 3
Output At speed	93 kW 2,400 rpm
Alternator	28 V 80 A
Starter motor	24 V 4 kW
Cold start limit temperature	-15 °C

- Catalytic converter with measuring points
- Fuel prefilter and fuel fine filter with water separator
- For fuels with sulfur content < 50 mg/kg
- Manual fuel feed pump
- Dry air filter with pre-separator

Diesel engine DEUTZ TCD 4.1 L4

Manufacturer	DEUTZ
Type	TCD 4.1 L4
Emission standard EU	Stage V
Emission standard USA	EPA Tier 4F
Output At speed	105 kW 2,200 rpm
Alternator	28 V 100 A
Starter motor	24 V 4 kW
Exhaust after-treatment	DOC DPF SCR
Cold start limit temperature	-15 °C

Technical data

6121-00-000 - 18.04.2026

- Fuel prefilter and fuel fine filter with water separator
- For fuels with sulfur content < 10 mg/kg
- Manual fuel feed pump
- Dry air filter with pre-separator

FUEL SYSTEM

12592-4

Fuel tank capacity	140 l
--------------------	-------

- Electric level indicator
- Shut-off valve to prevent fuel leakage in the event of a hose breakage

DRIVE

12593-4

Forward speed, maximum	18 km/h
------------------------	---------

Reverse speed, maximum	18 km/h
------------------------	---------

Tractive force, maximum	80 kN
-------------------------	-------

Gradeability, maximum	40 %
-----------------------	------

- Hydrostatic drive
- Drive reversible under load
- All-wheel drive

AXES

14746-1

Manufacturer	DANA
--------------	------

Front axle type	123
-----------------	-----

Front axle differential	100 %
-------------------------	-------

Rear axle type	123
----------------	-----

Rear axle differential	100 %
------------------------	-------

SERVICE BRAKE

11330-3

- Hydraulic foot brake as 2-circuit external force brake system
- Wet brake in oil bath

PARKING BRAKE

11332-1

- Spring tensioned, hydraulically released (SAHR)
- Manual pump to release the brake in case of system failure

EMERGENCY BRAKE

11333-1

- One circuit of the service brake

TIRES

12595-5

Tire size	12.00x20
-----------	----------

Tire filling	PUR
--------------	-----

STEERING

12241-1

- Hydraulic articulated steering with a double-acting hydraulic cylinder
- Steering wheel steering
- Emergency steering

HYDRAULICS

12240-6

1. Hydraulic tank capacity	80 l
----------------------------	------

2. Hydraulic tank capacity	100 l
----------------------------	-------

Operating pressure	200 bar
--------------------	---------

Technical data

6121-00-000 - 18.04.2026

- Two separate hydraulic circuits, for hammer hydraulics and travel drive/working hydraulics
- Load sensing, electrohydraulically pilot-controlled
- Inspection gauges for min/max level display
- Electric level indicator
- Electrical filter monitoring
- All fittings as JIC version
- All hydraulic motors and pumps in cast iron
- Manual pump for filling the hydraulic tanks
- Manual pump for tilting the cabin for maintenance work
- Hydraulic oil ATF

ELECTRICAL SYSTEM

12243-6

Operating voltage	24 V
Number of batteries	2 pcs.
Battery voltage	12 V
Battery charge	110 Ah

ELECTRICAL SYSTEM (OPTIONAL)

12822-3

- Jump start socket
- Enhanced sealing of the connectors with grease filling and sealing tape

COMPRESSED AIR SYSTEM

12254-3

- Piston Compressor
- Compressed air reservoir
- Air pressurization of hammer case to avoid contamination

LIGHTING

12244-4

All headlights and lights as LED variants:

- Two headlights for road illumination, one each for low and high beam
- Two rear tail lights, with reversing light, parking light, brake light and turn signal
- Two lights at the front, with parking light and turn signals
- Four headlights for the working area
- Four rear headlights
- Two working lights on the telescopic boom
- Two yellow flashing lights

12984-3

LIGHTING (OPTIONAL EQUIPMENT)

- Two red flashing lights
- Two blue flashing lights

12253-6

LIGHTING (OPTIONAL)

- Two additional working lights on the front of the cabin
- Rear working lights active while reversing
- Two driving direction lights red / green

CAB

12245-10

Driver's seat

- Lap belt
- Headrest
- Vinyl cover
- Adjustable backrest and seat surface
- Mechanical suspension

Diagnostic display 4.3"

- Active faults and fault history
- Parameter changes with authorization levels
- Miscellaneous engine data and operating data

Technical data

6121-00-000 - 18.04.2026

Enclosed cabin

- Heater with ventilation and filter
- Sliding windows on left and right
- Wiper/washer system for windscreen and rear window
- Interior lighting
- Document box
- Two mirrors
- All driving-related switches and operations within easy reach of the operator
- Front safety screen made of bulletproof glass
- Folding stone guard for windshield
- Hydraulically tiltable for an ideal view of the attachment
- Hydraulic hammer operation with foot switch or joystick
- Adjustable hammer interval time and impact frequency
- Driver display 4.3"

12985-7

DRIVER'S CAB (OPTIONAL EQUIPMENT)

- Two heated exterior mirrors
- Driver display 7"

Driver's seat

- 3-point harness
- Headrest
- Vinyl cover
- Adjustable backrest and seat surface
- Air suspension

12252-9

DRIVER'S CAB(OPTIONAL)

- Air conditioning system
- Rearview camera system
- Reverse signal acknowledgeable
- Hill start assist with automatic release / engagement of the parking brake
- Radio with USB port
- Inclination bar on display

- Driver's seat contact switch
- Driver's seat seatbelt contact switch

12246-2

TURRET AND TELESCOPIC BOOM

- Lift cylinder with lowering brake valve
- Telescopic boom with two extensions
- All bearing points made of highly wear-resistant plain bearings
- Robust deflector to protect telescopic boom against dirt
- Rock protector at the boom to protect hydraulic fittings
- Rock deflector on top of the boom

12247-2

FRONT DOZER BLADE

- Hydraulic lift
- Hoisting unit protected against falling rocks

12982-4

WORK EQUIPMENT (OPTIONAL EQUIPMENT)

NPK PH-2TS hydraulic hammer

Manufacturer	NPK
Type	PH-2TS
Operating weight	260 kg
Number of strokes, minimum	500per minute
Number of strokes, maximum	1,200per minute

- Central lubrication system for hydraulic hammer
- Extra long pointed chisel
- Special hydraulic hammer for scaling operations

EPIROC SB 202 T hydraulic hammer

Manufacturer	EPIROC
--------------	--------

Technical data

6121-00-000 - 18.04.2026

Type	SB 202 T
Operating weight	199 kg
Number of strokes, minimum	1,250per minute
Number of strokes, maximum	1,700per minute

- Central lubrication system for hydraulic hammer
- Pointed chisel

EPIROC SB 302 T hydraulic hammer

Manufacturer	EPIROC
Type	SB 302 T
Operating weight	315 kg
Number of strokes, minimum	950per minute
Number of strokes, maximum	1,250per minute

- Central lubrication system for hydraulic hammer
- Pointed chisel

12472-14

WORK EQUIPMENT (OPTIONAL)

Dust suppression system

Water tank capacity	130 l
---------------------	-------

- Water pump
- Flat spray nozzle on hydraulic hammer

Front supports

- Hydraulic telescopic support
- Right and left, fixed mounted on the front end
- Vertically extending
- Lowering brake valves in the hydraulic cylinders
- Alarm when the supports are moved

Mechanical quick-change system

- For different varieties of attachments
- Mounting plate with mechanical lock

Shock absorption system

- Automatic / deactivatable shock absorption system

12818-6

FIRE PROTECTION

- Handheld fire extinguisher

12993-3

FIRE PROTECTION (OPTIONAL EQUIPMENT)

- HRD fire suppression system (PROTECFIRE) with manual trigger and dry chemical extinguishing agent
- HRD fire suppression system (PROTECFIRE) with automatic trigger and dry chemical extinguishing agent
- HRD fire suppression system (ANSUL) with manual trigger and wet agent solution
- HRD fire suppression system (ANSUL) with automatic trigger and wet agent solution
- Portable fire extinguisher (ANSUL) with 7.7 kg of dry chemical extinguishing agent

12248-6

PAINTWORK

Color RAL 1007 / 7016

12249-5

ACCESSORIES

- Two wheel chocks
- Two hazard warning triangles
- Tool bag
- Safety helmet and hearing protection
- First aid kit

ACCESSORIES (OPTIONAL)

13014-3

- Spare tire
- Central lubrication system on basic vehicle
- Plug-in pre-fittings for remote control
- Remote control

DOCUMENTATION

11344-3

- A printed operating manual in the local language in the document box
- Operating manual, spare parts list and circuit diagrams in electronic form via online access

DOCUMENTATION (OPTIONAL)

12825-4

- An additional operating manual in local language, in printed form, included with the machine
- A spare parts list in local language or English, in printed form

MACHINE SOFTWARE

12263-2

- Interface language in local language

MAINTENANCE KITS (OPTIONAL EQUIPMENT)

12824-3

- Service package, 2000 operating hours
- Service package, 3000 operating hours
- Service package, 5000 operating hours

PAUS CONNECT CLOUD (OPTIONAL)

11355-8



The PAUS CONNECT CLOUD collects and visualizes data, messages or location information of the machine.

The data is transmitted to the cloud using a built-in telemetry unit.

Your advantages:

- Faster service
- Lifecycle cost management
- Data transmission via existing wi-fi and/or cellular networks
- Data buffering of all data in case of no connectivity (up to 30 days)
- Access to the PAUS CONNECT CLOUD
- Remote diagnostics/remote maintenance
- Statistical usage analysis
- Vibration monitoring
- Individual evaluation and statistics

CUSTOMER SERVICE

11353-2

Repair work and maintenance work are central points in customer support. Here, PAUS is broadly positioned and offers its customers and dealers worldwide an extensive service program. Trained employees are available on our service hotline, as are competent contact persons at our local dealers.

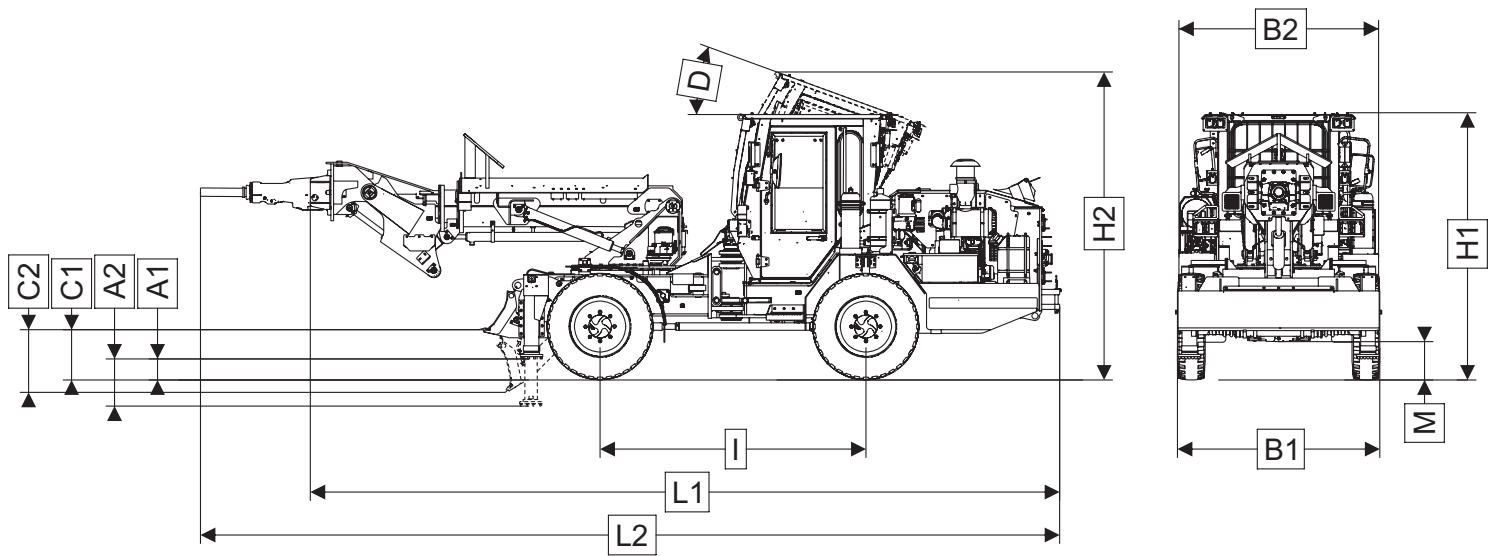
11354-2

SPARE PARTS

We attach great importance to a high level of availability of PAUS spare parts. In addition to maintenance and service parts, which are available at any time, customers and dealers are able to purchase spare parts for engines, axles, transmissions, etc. easily and quickly through us. Benefit from our on-line catalog with refined spare parts lists.

DIMENSIONS

10690-5



844492-04
PR00100-01
PR00032-02

The illustration may differ from the scope of delivery

Dimension	Note	Value	Unit
A1 *	Front supports *	260	mm
A2 *	Front supports *	595	mm
B1		2,290	mm
B2		2,405	mm
C1		455	mm
C2		555	mm

** Optional*

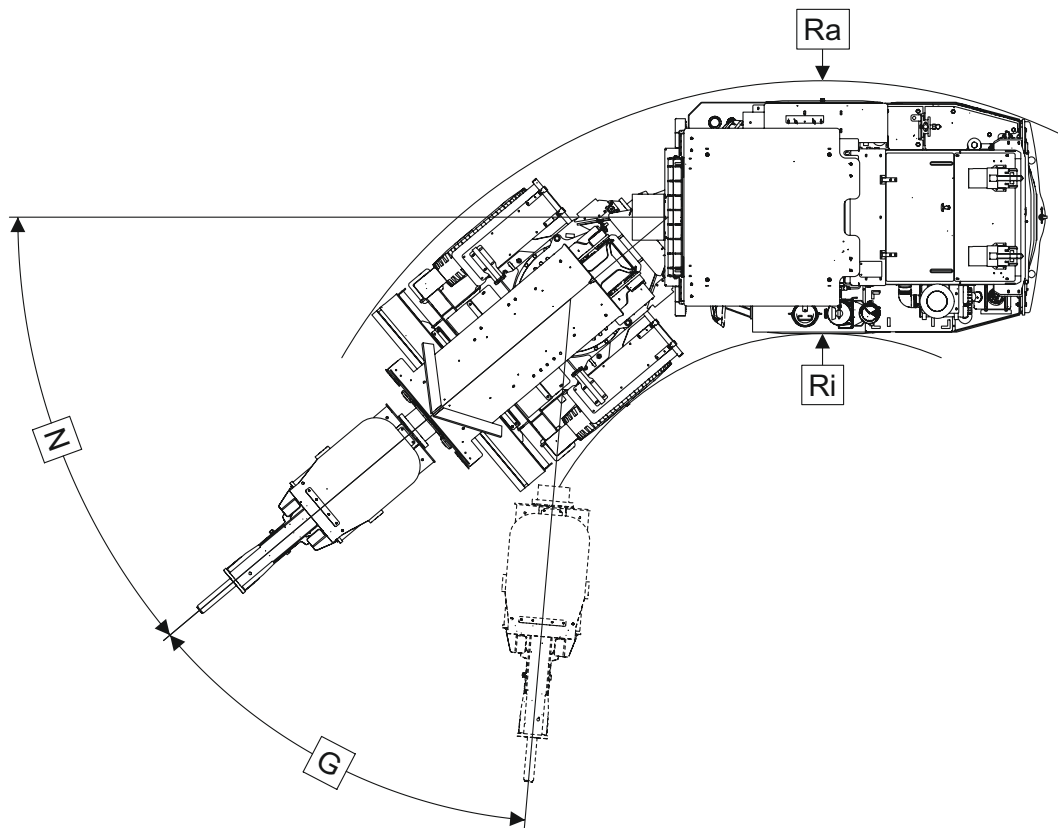
Technical data

6121-00-000 - 18.04.2026

Dimension	Note	Value	Unit
D		20	°
H1		2,715	mm
H2		3,105	mm
I		2,900	mm
L1		8905	mm
	Mechanical quick-change system *	8780	mm
L2 *	NPK PH-2TS hydraulic hammer (without chisel) *	9595	mm
	EPIROC SB 202 T hydraulic hammer (without chisel) *	9435	mm
	EPIROC SB 302 T hydraulic hammer (without chisel) *	9515	mm
M		385	mm

* *Optional*

TURNING RADII



The illustration may differ from the scope of delivery

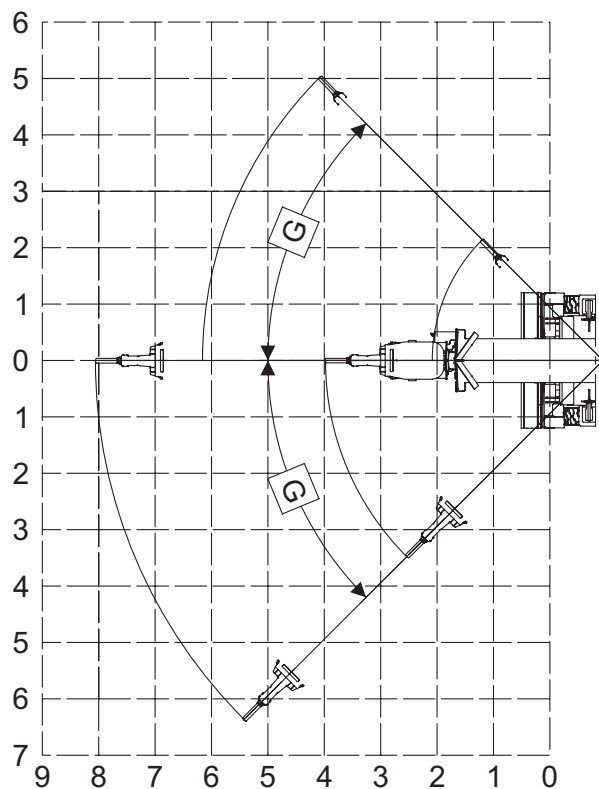
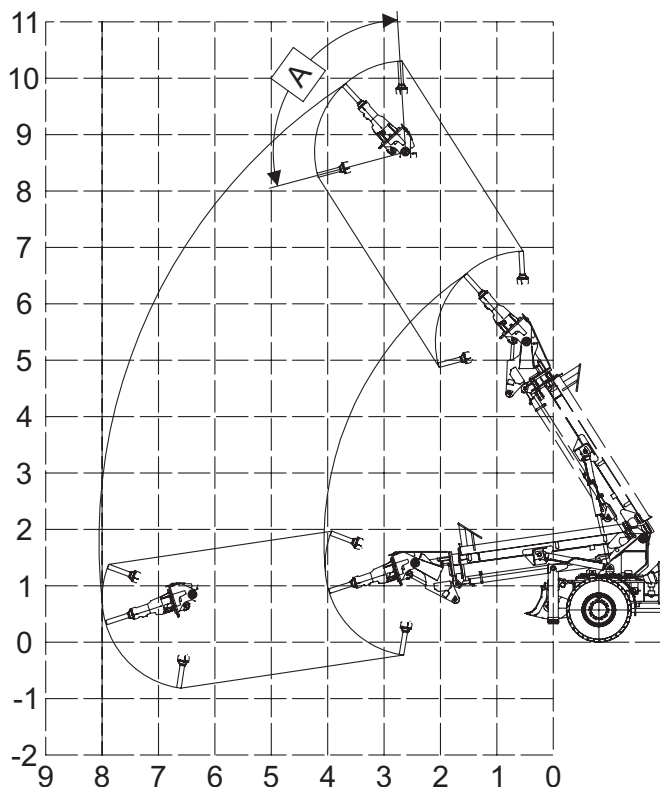
Dimension	Note	Value	Unit
N	Steering angle, maximum	40	°
G		45	°
Ri		2,800	mm
Ra		5,360	mm

Technical data

6121-00-000 - 18.04.2026

10692-5

HYDRAULIC HAMMER WORKING AREA



PR00032-02

The illustration may differ from the scope of delivery

Dimension	Note	Value	Unit
A		100	°
G		45	°